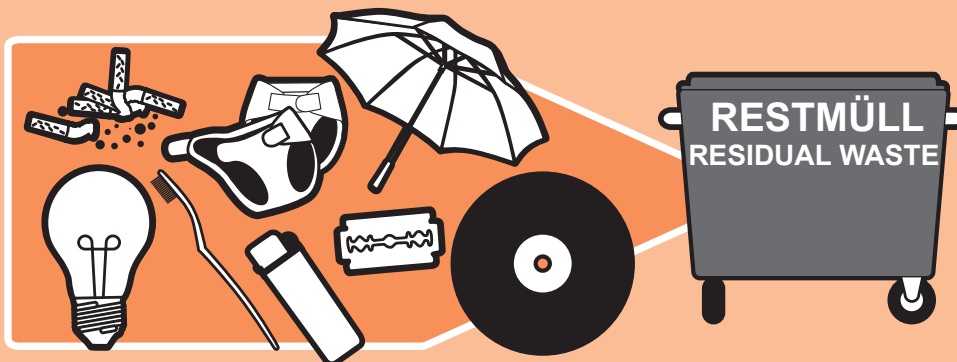


These items should go in the residual waste container -Grey Bin

- Adhesive Tape
- Ashes (cold)
- Audio cassettes
- Ballpoint pens
- Bird sand
- Bones
- Brushes
- Candle stumps
- Chewing gum
- Cigarette butts
- Cleaning rags
- Combs
- Cotton wool (buds)
- Cover films & foils
- Diapers
- Disposable gloves
- Felt pens
- Fine-mesh tights
- Greaseproof paper
- Handkerchiefs
- Hoover bags
- Hygiene articles
- Leather
- Leftover food (cooked)
- Light bulbs
- Lighters
- (Paint) brushes
- Photographs
- Rags/Remnants
- Razor blades
- Records
- Rubber
- Sanitary towels
- Small animal litter
- Soiled paper
- Sticking plasters
- Sweepings
- Tampons
- Thermos flasks
- Toothbrushes
- Toys
- Umbrellas
- Video cassettes
- Wallpaper



DO NOT put in the residual waste:

- Refuse containing hazardous substances/pollutants
- Construction waste



You can contact us at:

Telefon 02 21 / 9 22 22 24
Fax 02 21 / 9 22 22 25
E-Mail kundenberatung@awbkoeln.de
Internet www.awbkoeln.de

